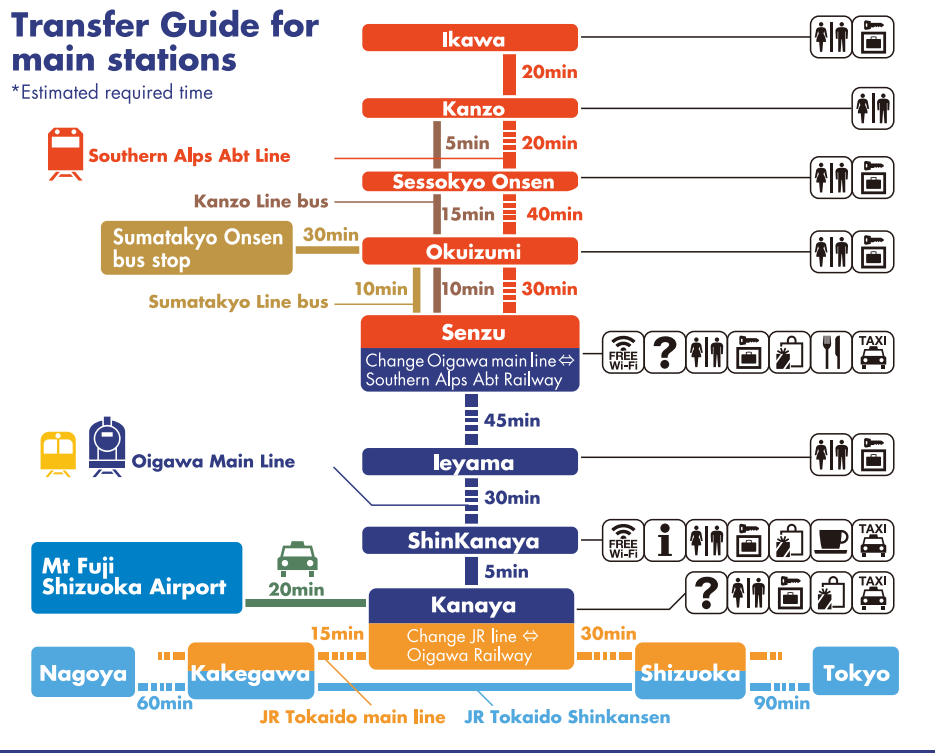


Access



Transfer Guide for main stations

*Estimated required time



Visit our website for fares, timetables and other info
oigawa-railway.co.jp/en/
 Telephone *Japanese only
+81(0)547-45-4112 (9.00-17.00)



Oigawa Railway Co., Ltd.
 〒428-8503 1112-2 Kanaya Azuma, Shimadashi,
 Shizuoka, Japan



Welcome to OIGAWA RAILWAY

Visitors' guide

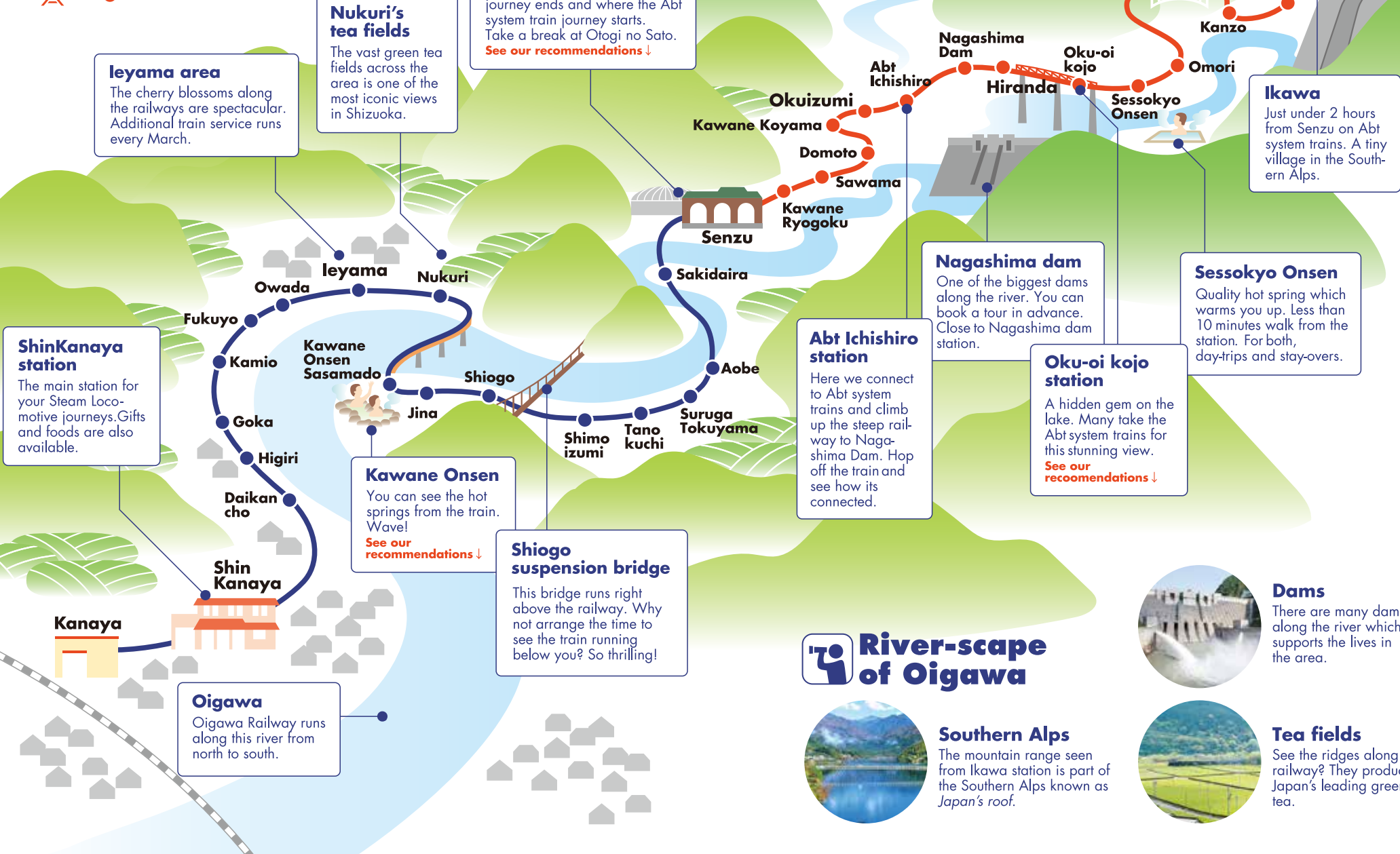
ENGLISH

Sit back and relax... another way to enjoy train journeys in Japan

Oigawa Railway - the only railway in Japan running Steam Locomotives throughout the year on daily basis. Come and see the Japanese countryside on these nostalgic trains. You will witness the views you have never seen before...



Welcome to Oigawa Railway!



ShinKanaya station
The main station for your Steam Locomotive journeys. Gifts and foods are also available.

Iyama area
The cherry blossoms along the railways are spectacular. Additional train service runs every March.

Nukuri's tea fields
The vast green tea fields across the area is one of the most iconic views in Shizuoka.

Senzu station/Otogi no Sato
Where your Steam Locomotive journey ends and where the Abt system train journey starts. Take a break at Otogi no Sato. [See our recommendations ↓](#)

Sumatakyo Onsen
The hot spring in the mountains is known for its high quality water and quiet surroundings. [See our recommendations ↓](#)

Yume no Tsuribashi
Popular bridge to cross once in your lifetime. It's clear, emerald green water is worth seeing. [See our recommendations ↓](#)

Seki no sawa kyo ryo
The highest railway bridge in Japan. One of the photogenic spots along the railway.

Ikawa
Just under 2 hours from Senzu on Abt system trains. A tiny village in the Southern Alps.

Sessokyo Onsen
Quality hot spring which warms you up. Less than 10 minutes walk from the station. For both, day-trips and stay-overs.

Nagashima dam
One of the biggest dams along the river. You can book a tour in advance. Close to Nagashima dam station.

Oku-oi kojo station
A hidden gem on the lake. Many take the Abt system trains for this stunning view. [See our recommendations ↓](#)

Abt Ichishiro station
Here we connect to Abt system trains and climb up the steep railway to Nagashima Dam. Hop off the train and see how its connected.

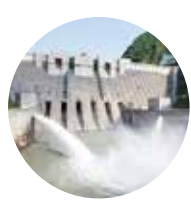
Kawane Onsen
You can see the hot springs from the train. Wave! [See our recommendations ↓](#)

Shioigo suspension bridge
This bridge runs right above the railway. Why not arrange the time to see the train running below you? So thrilling!

River-scape of Oigawa



Southern Alps
The mountain range seen from Ikawa station is part of the Southern Alps known as Japan's roof.



Dams
There are many dams along the river which supports the lives in the area.



Tea fields
See the ridges along the railway? They produce Japan's leading green tea.

Enjoy our one and only Steam Locomotive experience!



Steam Locomotives
Oigawa Railway is the only railway in Japan running Steam Locomotives throughout the year. Our four running steam locomotives were made back in 1930s and 40s-just like a classic car. All unique in their own ways, including the sound of the whistle. Since we started this Steam Locomotive project in 1976, we have been leading other railways in this field and continuing to improve. You can book a trip to the maintenance workshop at ShinKanaya station. (See website for details...<http://oigawa-railway.co.jp/en/storage>)
◀ C10 Model 8 is our oldest train built in 1930. It is the only existing C10 model locomotive.



Passenger carriages
The history of the passenger carriages, running with our Steam Locomotives, goes back before the war. Occasionally they are used for films and TV shootings for its unique atmosphere.



Conductors
Your journey will be accompanied by our friendly conductors who will guide you all the way with some music and a big smile.

Abt System Trains

Abt trains can go up and down the steep mountains with its rack wheel pinions meshing with a toothed rack running in the middle of the railway. They were introduced in 1990 when a new railway was laid to cover a section with a 90m height difference, which was created as the original line went below water surface due to Nagashima dam's construction. Oigawa Railway is the only railway in Japan using this system. (See website for details...<http://oigawa-railway.co.jp/en/abt>)
▶ Between Abt Ichishiro station and Nagashima Dam station is the steepest railway running in Japan.



Hop off the train to explore! Recommended spots



Oku-oi Kojo station
The unmanned station in the middle of an iron bridge crossing Sesso Lake is popular for its view. There's also a hiking trail to Sessokyo Onsen station. (See website for details...<http://oigawa-railway.co.jp/en/course/sessokyo>)
Access: Take the Southern Alps Abt Line for Oku-oi Kojo station or take a bus from Senzu station. Approx. 20-min walk from Kojo Iriguchi bus stop.

Otogi no Sato
Take a break at this cultural facility next to Senzu station. There is a cafe and a shop full of Oigawa specialties.
Access: Approx. 2-min walk from Senzu station.



Sumatakyo Onsen/ Yume no Tsuribashi
Sumatakyo Onsen is known for its slimy water which is believed to be good for your skin. You can enjoy a day trip or a stay at a ryokan with specialty dishes. It's 30-min walk to the bridge known for its dream-like view. Take a therapeutic walk in the forest. (See website for details...<http://oigawa-railway.co.jp/en/course/sumata>)
Access: Take the Oigawa Main Line for Senzu station, followed by a 40-min bus ride for Sumatakyo Onsen. Or take the Ikawa line for Okuizumi station, followed by a 30-min bus ride.

Kawane Onsen Fureai no Izumi
A spa popular for its hot spring from which you can see a bridge. Enjoy the local atmosphere by visiting the shops and restaurants.
Access: Approx. 5-min walk from Kawane Onsen Sasamado station on Oigawa Main Line.

Gifts to buy

We recommend the items you can only buy on the Steam Locomotives.



Goes well with green tea
Steam Locomotive cake

Packed with red beans
Steam Locomotive wheel cake
For your little ones
Connect and go!

Gift shops
ShinKanaya station Plaza Loco
Opposite to ShinKanaya station. Obento boxes and drinks are also available. Opening hours: 9.00-17.30

Senzu station Kiosk
Local specialties as well as train-related items. Opening hours: 9.30-16.30 (changes in winter)

Food to go

To accompany your journey...



Eki-ben
Obento boxes with local products. *Book in advance when ordering more than 10. TEL 0081 (0)547-45-2230

Soba & Udon stand-up meal
You can find the stall next to the shops at Senzu station. Try the most popular Sansai Soba (buck-wheat noodles) in a broth topped with wild vegetables)

History of Oigawa Railway

Our history goes back to 1925 with a mission to facilitate an electric power plant upstream and to carry material. It took six years to launch the main railway and has been supporting the local industries ever since. After the war, the northern railway, which was originally for hydro-power development was redeveloped for sightseeing. This is what is now known as Southern Alps Abt Line. We re-introduced Steam Locomotives in 1976 in its active form as dynamic storage experts. Since then, the railway company has been supported by railway fans around the country as it continues to pass on the history and Steam Locomotives to the future.

